

HE-XX series IP67 connector - patchcord

Description:

The OPTOKON introducing new effective low cost harsh environment connectors HE-XX series which are designed for Industrial networks, FTTH (Fiber to the Home), FTTA (Fiber to the Antenna), or any other harsh environmental projects. Preconnectorized cables significantly reduce cable installation time, saving money and accelerating FTTH subscriber connections.



HE-XX connector

- Bulkhead panel mount or In-line adapters
- Robust design keeps connector intact during installation

Features:

- Simple bayonet locking system
- IP67 protection for harsh environment
- Low Insertion Loss
- Proven design provides a hardened connector for outside plant deployment
 - Single mode/Multimode
 - SC, LC duplex, MTP hardened connector
 - Connector is designed to install on Cable
 - Environmentally-sealed connector housing permits rapid connection to external flush-mounted bulkhead adapter
- Dust cap included

Specifications:

Insertion Loss	HE-LC series: 0.2 dB typical
Return loss	SM: > 50 dB typical for PC, MM: > 30 dB
Ferrule material	full ceramic zirconia
Assembly procedure	glue and polish
Connection	physical contact
Lock mechanism	bayonet locking system
Operating temperature	-40°C to +70°C
Durability	min 500 cycles (<0.2 dB typical change)
Standards	EN 61076-3-106
Environmental protection	IP67

Connector variants:



HE-ULCD connector

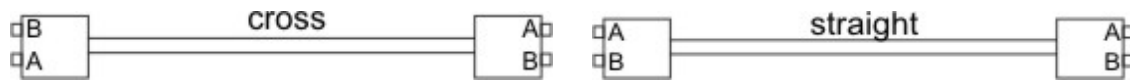


Ordering Code:

HE-AAA	-	CCC FFF	-	XX	-	(L2) - LLL	
<p>Connector type¹</p> <p>HE Plug (connector)</p> <p>AAA: Connector type Duplex LC connector</p> <p>LCD LC/PC (Multimode)</p> <p>ULCD LC/UPC (Singlemode)</p> <p>NLCD LC/APC (Singlemode -angled)</p> <p>xxx¹ SC, USC, NSC, MTP, NMTP</p>		<p>CCC – Cable type</p> <p>LD2 Tactical cable 2 fibers</p> <p>D8 Duplex 2.8 x 5.5 mm</p> <p>FF – Fiber type</p> <p>OM1 MM 62.5/125 μm</p> <p>OM2-4 MM 50/125 μm</p> <p>S2D SM G.652D</p> <p>S7A1 SM G.657A1</p>		<p>Cable length L, (L2) Length (m)</p> <p>Cable type</p> <p>P Pigtail</p> <p>JC Jumper crossed²</p> <p>JS Jumper straight</p>			

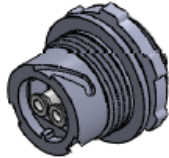
Note: 1) Other type (SC, MTP) on request, see relevant patchcord datasheet
2) JC-crossed is standard, straight on request

Crossed – straight connection:

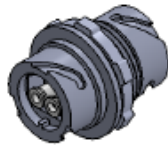


Adapters:

HE - XX	-	XXX	-	XX	-	XX
<p>XX: type</p> <p>BN Bulkhead</p> <p>BI In-line</p>		<p>XXX: adapter</p> <p>LCD Duplex LC</p> <p>SC SC adapter</p> <p>MTPO⁴ MTP adapter</p>		<p>XX: sleeve</p> <p>01 zirconia</p> <p>02 phosphor bronze</p> <p>XX not applicated</p>		<p>XX: color³</p> <p>BL blue</p> <p>GR green</p> <p>BG beige</p> <p>BK black</p> <p>AQ aqua</p>



HE-BN-LCD type
Note: 3) inside adapter

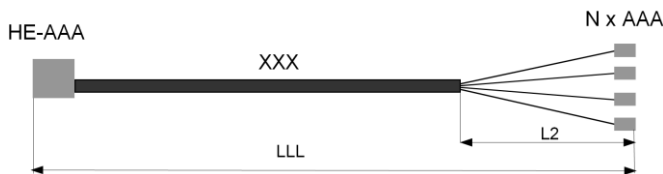


HE-BI-LCD type

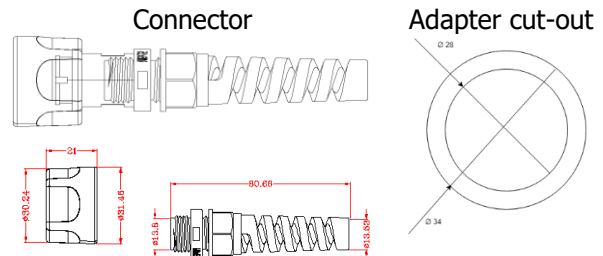
4) MTPx adapter key orientation: MTPO – opposed type only

Dust cap:
HE-CP Dust cap – connector type
HE-CA Dust cap – adapter type

Fan-out cable:



Dimensions:



Applications:

HE-ULCD-LD2 S7A1-JC-010
2xUPC-LD2 S7A1-JC-0.5-003
HE-BN-LCD-01-BL
HE-BI-LCD-01-BL

HE-ULCD cross cable, HE IP67 connectors, LD 2 fibers S7A1, 10 m fanout cable, HE-ULCD to 2x FC/PC connectors, LD 2 fibers S7A1, 3 m bulkhead with duplex LC adaptor, Zirconia sleeve, SM, blue in-line with duplex LC adaptor, Zirconia sleeve, SM, blue